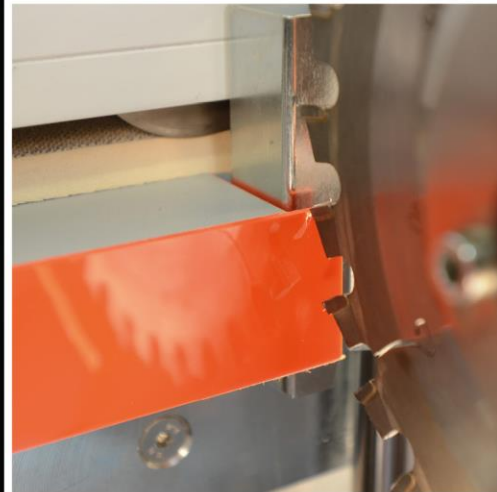


## AURIGA 1308 XL multi





# table of contents

|   |           |
|---|-----------|
| <b>BASIC MACHINE</b> .....                      | <b>6</b>  |
| <b>TECHNICAL SPECIFICATIONS</b> .....           | <b>6</b>  |
| <b>MACHINE OPERATION</b> .....                  | <b>7</b>  |
| <b>DIGITALISATION</b> .....                     | <b>9</b>  |
| <b>EQUIPMENT VARIANTS AND ACCESSORIES</b> ..... | <b>11</b> |
| <b>INFEEED AREA</b> .....                       | <b>14</b> |
| <b>PRE-MILLING UNIT</b> .....                   | <b>16</b> |
| <b>EDGE FEEDER</b> .....                        | <b>17</b> |
| <b>GLUE APPLICATION</b> .....                   | <b>17</b> |
| <b>PRESSURE UNIT</b> .....                      | <b>19</b> |
| <b>END TRIMMING UNIT</b> .....                  | <b>20</b> |
| <b>MULTIFUNCTIONAL TRIMMING UNIT</b> .....      | <b>20</b> |
| <b>FORM TRIMMING</b> .....                      | <b>21</b> |
| <b>FINISHING</b> .....                          | <b>22</b> |
| <b>SURFACE SCRAPER UNIT</b> .....               | <b>22</b> |
| <b>SPRAYER UNIT</b> .....                       | <b>23</b> |
| <b>PACKAGING</b> .....                          | <b>24</b> |
| <b>SERVICE</b> .....                            | <b>24</b> |
| <b>GUARANTEE</b> .....                          | <b>25</b> |
| <b>Annex</b> .....                              | <b>26</b> |



## HOLZ-HER Edgebander AURIGA 1308XL multi



### **AURIGA series**

highest user-optimization, productivity, precision and safety for years thanks to heavy and rigid frame.

### **Control technique and operation**

with rotating and tiltable control panel, dustproof. Extensive memory, complete compilation of all operating data, service instructions in plaintext. Fully automatic handling of the processing units via **NC-servo axes**.

### **GluJet hybrid technology**

highest flexibility on glue application via **patented nozzle technique** to gain an **optical zero joint**. EVU and PUR glue can be handled without laborious and expensive accessories. Glue is ready to use either in form of cartridges or granules. Neutral or coloured glue can be changed quickly. Lowest energy expenses thanks to **shortest heating time within 3 minutes**. Automatic cleaning of the glue station after pressing a button only.

### **Unit technique**

Basing on our 50 years' experience concerning edge banders we supply modern and solid working units which have been developed continuously in order to grant high-class processing of edges and guarantee best product quality on all ready items.

### **Tooling technique**

latest technical up-date on diamond driven milling technology with connected chip removal and patented AirStream technology, each matching with your special application range.

### **Accessories**

The wide range of accessories starts from the Nesting Package for hinge holes up to electronically controlled sprayer unit which enables to avoid reoperating steps. Also retrofitting of the accessories is easily possible

thanks to modelkit method.

### BASIC MACHINE

**5075424 BASIC MACHINE AURIGA 1308XL multi 200 - 400 V / 50 Hz,** 63.650  
with manual pressure bridge adjustment

**5075427 BASIC MACHINE AURIGA 1308XL multi 230 V / 60 Hz,** 63.650  
with manual pressure bridge adjustment

with welded base frame and stable construction  
with an industry transport chain and handy surface pads  
with centrally adjustable pressure bridge and self clamping  
(tool less adjustment)

with safety hood above the post-machining area  
safety cover fitted with sound-absorbing material  
with central lubrication of the chain guide rail, manually  
via lubricating nipples  
powerful drive motor for shock-free transport of the  
workpieces

with integrated swarf box at the end of the machine  
with integrated control box for the electronics, easily  
accessible  
with zero-potential electrical contact for dust extraction

with pneumatic locking pin for the shortest workpiece  
distance on the machine inlet

**5032404 Pull-out workpiece support, distance 600 mm**

**5034477 Second workpiece support incl. connection kit** 930

connection kit: 503.4477  
add. workpiece support: 503.2404



### TECHNICAL SPECIFICATIONS

Edgebander for edging and post-machining panel  
materials

**Edging thickness of coiled edging: 0.4 - 3 mm**

(depending on material)  
**Edging thickness of strip edging:** 0.4 - 8 mm  
(depending on material)  
Edging cross section: max. 6 x 42 mm  
Edging height: max. 65 mm  
Panel thickness: 8 - 60 mm  
(limitation possible on some units)  
Workpiece width: min. 65 mm  
Workpiece length: min. 160 mm (without corner copying unit)  
Workpiece width: min. 180 mm  
Feed rate: 10 m/min.

## MACHINE OPERATION

**5068931 Edge Control PPC 322 W**  
with 21.5" 16:9 color touchscreen  
High performance controls for extremely simple machine operation  
for **efficient machine setup and conversion.**  
Rotating and tilting control panel at eye level with Windows-like user interface, all information is displayed in plain text and/or graphics, with extensive program memory.  
External USB interface



**5034180 ECO MODE**  
This power-saving mode is an automatic **stand-by mode**, which puts all drives out of operation as soon as no workpiece is entered into the machine. The motors correspond to the new energy efficiency class IE 3. If a workpiece is not entered into the machine over a longer time period (6 minutes) the heater of the glue application system automatically shuts down.  
No more energy is consumed by the machine.



### IntelliSet

The intelligent tool correction allows intuitive adjustment of all milling and scraper operations. The operator can see graphically at any time which corrections are being made in which direction. The values entered at the control for horizontal and vertical tool infeed are automatically converted to the actual axis values in the background. Test workpieces are thus a thing of the past.



### fa.s.t.

fa.s.t. = fast setting technology

makes it possible for edgebanders to perform various operations simultaneously.

Units can be switched on intelligently without having to empty the machine before running a set-up process, making it possible to fully utilize the entire capacity.

The locking roller at the machine infeed controls the setup gap dynamically.



### iTronic-Package

2.870

consists of:

iTronic pressure and glue quantity control  
motorized bridge adjustment

**5070622** Motorized pressure bridge adjustment with NC axis via program control  
**without iTronic**

1.010

**5073118** **Bar code scanner**

1.860

Standard bar codes: Code 39 or Code EAN 128 2D  
codes: DataMatrix, PDF417





## DIGITALISATION



### 5062349 **WEINIG App Suite is a smart App with real added value**

360 \*

The functions of the WEINIG App Suite help to monitor the machines in real time and make better decisions thanks to the increasing transparency. The connection to the cloud database provides information about current orders, operating data, service intervals, downtimes, and optionally critical sensor data - completely independent of time and location. Data transfer between the machine and the cloud is carried out according to current security standards. With the App Suite, you are ideally connected to the WEINIG world and its digital services. The App Suite can be used simultaneously as a browser version and as a mobile App for all current computers, smartphones and tablets.

Before use, independent registration is necessary at [weinig.app](http://weinig.app) or [holzher.app](http://holzher.app) or by downloading the app from an app store.

#### **Monitoring with viaCockpit - 12 months runtime**

Before the end of the period, you will receive an offer for a paid extension of viaCockpit. The current price for 12 months per connected machine is 360,- €.

Maximum plant availability is at the top of the priority list. Production analysis and optimization are therefore essential. The monitoring functions of the WEINIG App Suite enable a digital all-round view of production at any time and from anywhere. For example, status data, machine messages, operating data or optionally critical sensor data can be viewed.

#### **Our App Suite with viaCockpit - excerpt of your advantages**

- Reduction of costs and downtimes, ... with viaMonitor
- Increase machine availability by detecting frequent causes

- of malfunctions with viaNotify
- Overview of order history and quick knowledge of production progress with viaOrder
- Extend machine life with digital maintenance manual from viaMaintain
- Key productivity figures such as units produced, linear meters, ... with viaCondition
- Always and everywhere stay informed about the current situation of the machine with viaNotifications



#### Appendix Weinig AppSuite

#### 5067020 **Connectivity with the viaConnector Edge - 12 months term**

500 \*

The viaConnector Edge is the link between your machines and software solutions. It offers comfortable access to your machine data and provides it in your chosen destination. Destinations can be CSV-documents, SQL databases, or your own cloud. The transmission is event based, so your data is transferred as it occurs. The contract period is at least 12 months and can be extended at any time.

#### **The following machine data is provided**

(scope varies depending on machine type)

- Operating data
- Machine status
- Order data
- Machine messages
- Maintenance components

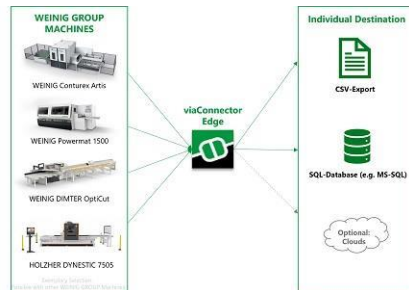
#### **Our viaConnector Edge - your advantages**

- Transfer of machine data from your machine(s)
- Individual target system selection, such as CSV files, SQL databases, etc.
- No internet connection needed, a local network is sufficient
- Independent further processing of raw machine data in third-party systems, such as ERP systems, Microsoft Excel, Microsoft Power-BI, etc.
- Suitable addition to the WEINIG App Suite (already visualized machine data)

#### **Attention**

In order to be able to claim any subsidies or tax benefits relating to digitization, Industry 4.0, IoT or similar, it is essential to ensure that the machine is connected to the company's ERP system. The exact conditions must be taken from the corresponding application for funding. It is the responsibility and care of the customer to confirm

that this connection is guaranteed. Weinig ensures the technical prerequisite that the machine meets the basic requirements and is therefore prepared for the connection.



Only in connection with WEINIG App Suite!

## EQUIPMENT VARIANTS AND ACCESSORIES

**5040869 iTronic - pressure and glue quantity control**  
automatic, program-controlled fine adjustment for optimum adjustment to edge thickness, edge materials and types of glue to guarantee optimum process results.

**Automatic package consisting of:**

- automatic glue quantity control
- automatic guillotine
- automatic pressure unit
- monitoring of remaining glue quantity
- automatic PUR purging routine



with iTronic package only

- |                |  |     |
|----------------|--|-----|
| <b>1302620</b> | Wheeled base   | 790 |
| <b>5064970</b> | <b>LED-package (3 pc)</b> for infeed/post-processing area<br>State-of-the-art LED technology with tempered, break-proof glass.<br>including LED workpiece sequence display | 775 |



5059726 **RETURN-MASTER 5920 connection package** 1.520  
**consists of:**

Emergency stop connection  
Synchronisation of feed speed  
Light barriers with control modules  
Adapted workpiece support  
Safety devices according to the latest machine regulations  
CE conformity

5026748 **Preparation RETURN-connection (third-party product):** 1.220

**HOLZ-HER RETURN-MASTER 5920**  
**The perfect complement for your edgebander**

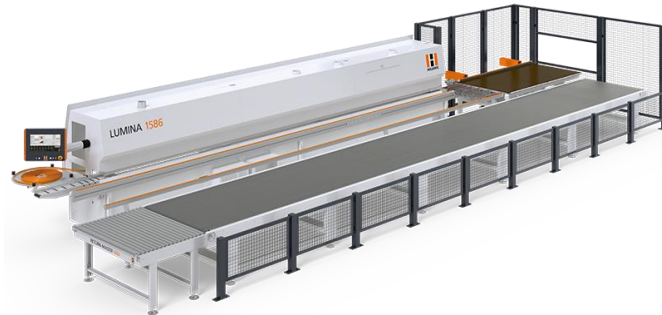
Even in smaller workshops, automation is becoming increasingly important to remain competitive and operate profitably.

The RETURN-MASTER is a component for automated edge processing, whether in mass production or in lots of 1.

**Your advantages:**

- One-man operation
- Manufacturing cell from one single source with fully integrated safety concept
- Heavy-duty construction  
with a net weight of 2 tons, the RETURN-MASTER is particularly stable, low-maintenance and durable

**Ask for your individual offer.**

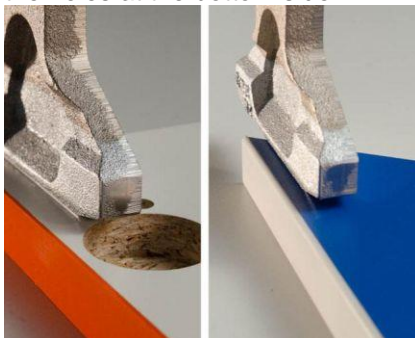


## NESTING PACKAGE

- 5037638 Nesting tracer shoes vertical - bottom** 840  
for 1 trimming unit and radius scraper  
Tracer shoes vertical at the place of the copy rollers for the **bottom units**. In case of **hinge holes** or other similar holes in the workpiece. The workpieces must be entered in the machines with the holes at the bottom side.



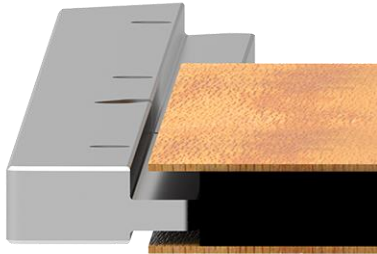
- 5037639 Nesting tracer shoes vertical for top and bottom** 1.670  
for 1 trimming unit and radius scraper  
Tracer shoes vertical at the place of the copy rollers for the **top and bottom units**. In case of **hinge holes** or other similar holes in the workpiece and additionally for peak or trapezoidal workpieces. The workpieces must be entered in the machines with the holes at the bottom side.



## INFEEED AREA

**5023684 Infeed fence standard**  
Infeed fence for exact feeding of the workpiece to the pre-milling unit, simply adjustable for the regulation of the chip dropping during milling

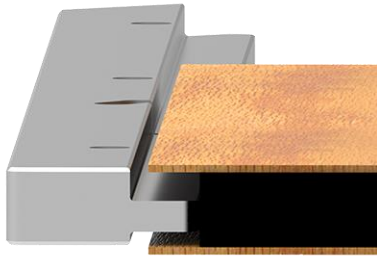
**5054346 Infeed fence VENEERS** 270  
Infeed fence for exact feeding of the workpiece to the pre-milling unit, simply adjustable for the regulation of the chip dropping during milling.  
incl. support with integrated rollers  
Infeed fence long for precise feeding of very long work pieces for workpieces with projecting veneers



**5065164 Infeed fence long 1252 mm** 655  
Extended infeed fence for exact feeding of very long workpieces to the pre-milling unit, simply adjustable for the regulation of the chip dropping during milling

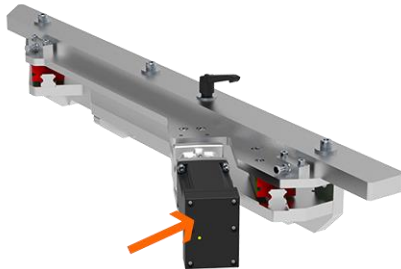


**5065175 Infeed fence long VENEER 1252 mm** 920  
Extended infeed fence for exact feeding of very long workpieces to the pre-milling unit, simply adjustable for the regulation of the chip dropping during milling.  
incl. support with integrated rollers  
Infeed fence long for precise feeding of very long work pieces for workpieces with projecting veneers



- 5065143 **Motorized adjustment infeed fence automatically adjustable through the control panel to adjust depth of cut**

1.040



#### AIR CUSHIONED TABLE

- 5071364 **Air cushioned table BS301 (230 V / 400 V, 50 Hz) incl. long infeed fence**

4.170

table with air cushions for an easy and gentle movement of the material at the infeed area of the machine  
**Fan control via control panel**

**length:** 1800 mm, **width:** 600 mm  
with height adjustable frame base for alignment to the infeed height of the machine (880 - 900 mm)



**Only in combination with motorized infeed fence!**

- 5071365 **Air cushioned table BS301 (230 V 60 Hz) incl. long infeed fence**

4.170

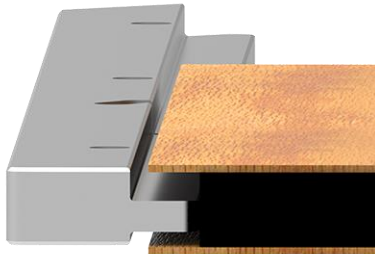
table with air cushions for an easy and gentle movement of the material at the infeed area of the machine  
**Fan control via control panel**

**length:** 1800 mm, **width:** 600 mm  
with height adjustable frame base for alignment to the  
infeed height of the machine (880 - 900 mm)



- 5067216 Infeed fence long for air table - VENEERS**  
incl. support with integrated rollers  
Infeed fence long for precise feeding of very long work  
pieces for workpieces with projecting veneers

670



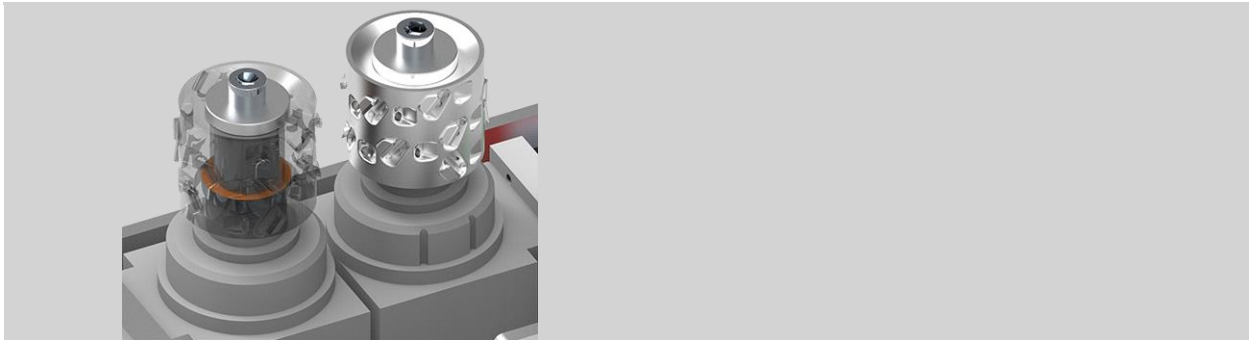
#### PRE-MILLING UNIT

- 5071666 Pre-milling unit FG201 with 2 cutter units**  
for joining the panel edge  
1x counterclockwise run, 1x clockwise run,  
manually adjustable run-in linear stop,  
with height-adjustable millers



- 5050211 Diamond cutter Ø 70 x 64 x 30 mm, 2+2 teeth, left  
hand**  
**Air Stream System (HOLZ-HER / LEUCO patent)**  
For pre-milling unit **1802 / FG201**

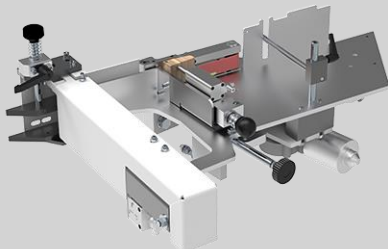




**5050212** Diamond cutter, dia. 70 x 64 x 30 mm, **2+2 teeth, right hand**  
**Air Stream System (HOLZ-HER / LEUCO Patent)**  
For pre-milling unit **1802 / FG201**

#### EDGE FEEDER

**5034139** **Edge feeder 1903**  
Automatic transport of coils and strips  
max. load capacity: 40 mm  
for coils: max. edge thickness 3 mm (material dependent)  
forward cut up to max. 65 mm edge height (material dependent)  
max cross section 135 mm<sup>2</sup> (material dependent)  
incl. support table for coils Ø 820 mm



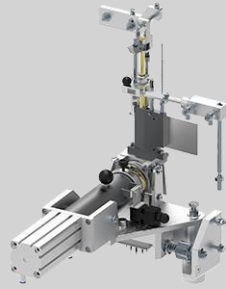
#### GLUE APPLICATION

**5034651** **Glue application system Glu Jet GJ301 (2,3 kW, 50 Hz)**  
Automatic adjustment of gluing height (tracing nozzle)

**Glu Jet hybrid technology**  
Processing of EVA and PUR adhesives  
Adhesive in cartridge or granules form  
Processing of neutral and coloured adhesives

For processing hot-melt adhesive in cartridge or granules form  
Glue applied by means of nozzle technology, heat-up time: 3 minutes  
Incl. automatic reloading of glue (optional hoppers required)  
Incl. manual glue rinse function through separate rinse channel

Magazine capacity: 1 cartridge (approx. 330 g), incl. air pressure adjustment for the glue pressing cylinder  
Automatic glue temperature reduction according to time



**5051774 Glu Jet GJ301 NC Glue application system (2.3 kW, 50 Hz)**

990

Motor-driven, automatic adjustment of glue height (sensing nozzle)

**Glu Jet hybrid technology**

Processing of EVA and PUR adhesives  
Adhesive in cartridge or granule form  
Processing of neutral and colored adhesives

For processing hot-melt adhesive in cartridge or granule form

Glue applied using nozzle technology, heat-up time: 3 minutes

Incl. automatic glue replenishment (hoppers required)

Incl. manual glue purging function with separate purging channel

Magazine capacity: 1 cartridge (approx. 330 g), incl. air pressure adjustment for the glue pressure cylinder  
Automatic glue temperature reduction according to time



**5040211 Glu Jet rinse hopper**

130

to collect glue residues during rinse procedure  
Heat-resistant non-stick silicone insert included



2891735 Hopper for 1,4 kg glue cartridges (4 cartridges)

205



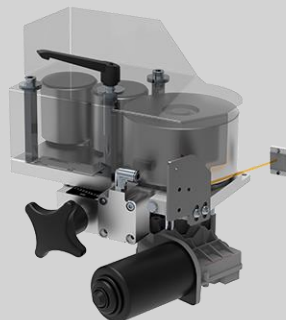
5018209 Hopper for 1,5 kg glue granulate

485



## PRESSURE UNIT

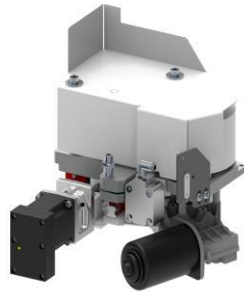
5028552 **Pressure unit 1912-3 pneumatic**  
first roller driven with plunge-in control,  
2 conical support pressure rollers



5071739 **Pressure unit DW301 motorized with NC servo axis**  
first roller driven with plunge-in control,

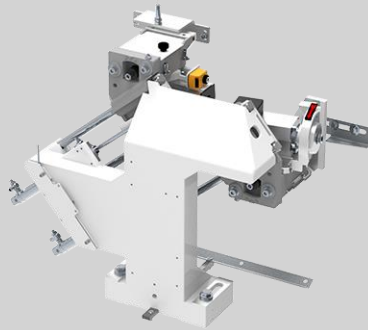
1.030

2 conical support pressure rollers



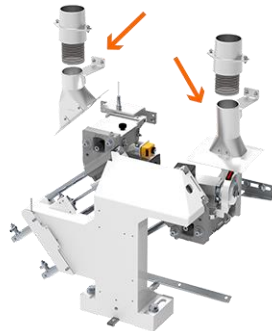
#### END TRIMMING UNIT

**5028498 End trimming unit 1918 (60 mm) pneumatic**  
(2 x 0,45 kW, 12000 min<sup>-1</sup>) with electro pneumatic  
angle  
**adjustment 0 - 10°**, for coils and strips max. 15 x 45  
mm,  
3 x 65 mm, incl. 2 alternating teeth carbide circular saw  
blades,  
Ø 110 mm, 16 teeth



**5039628 Dust extraction hoods for end trimming unit 1918**

465



#### MULTIFUNCTIONAL TRIMMING UNIT

**5075227 Multifunctional trimming unit FR502 MOT6 MULTI**  
100% repetition accuracy at the touch of a button based  
on zero-clearance mechanisms and 6 fully digital NC  
servo-axes.

Machine adjustments on linear guides.  
With standard blast nozzles in front of sensing rollers to  
blow away chips in front of sensing areas.

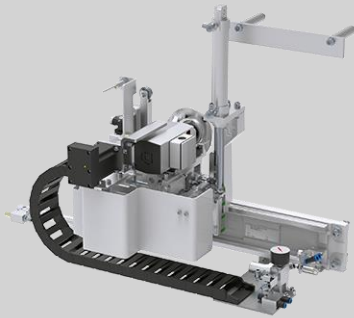
Horizontal sensing with angular sensing rollers developed especially for processing modern, high gloss edging.

Multi profile tool:  
Flush trimming 8 mm, Radius 1,3 mm + Radius 2 mm.



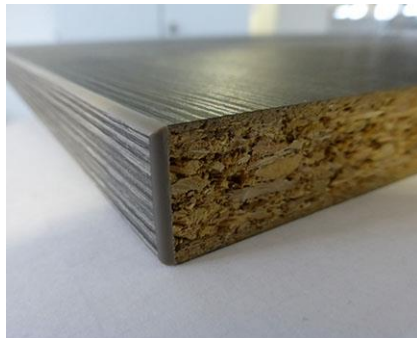
## FORM TRIMMING

**5063734 Corner copying unit FF301 MOT1**  
(1 x 0.22 kW, 300 Hz, 9000 min<sup>-1</sup>)  
incl. motorized horizontal adjustment of the axis  
corner copying function up to 3 mm edging thickness  
workpiece thickness: 12 - 60 mm  
incl. diamond tool R = 2 mm  
incl. automatic plunge-out control for edge thickness over 8 mm  
(max. feed speed 10 m/min.)  
Incl. dust extraction



**5062002 Special software package for shelves** with rounded faces

365



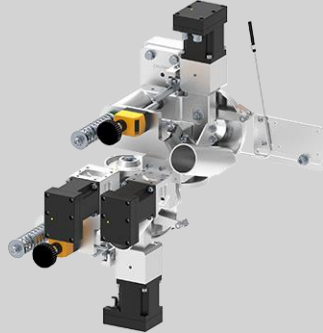
**5065522** Diamond coated cutter dia. 60 mm x 10 mm, dia. 16 mm,  
**Z = 3, R = 2 mm** with integrated chip removal, for corner copy unit **1832 / FF301**



## FINISHING

## SCRAPER UNIT

- 5075210 Scraper unit ZK502 MOT6 MULTI**  
with motor-driven adjustment of 6 axis,  
with chip remover.  
incl. blast nozzles  
with two multi-scraper holders,  
incl. cutting tools R 1,3 + R 2 mm



- 5075425** Chip collector for scraper unit

## SURFACE SCRAPER UNIT

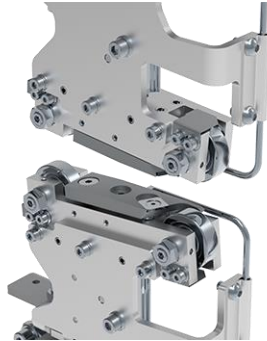
- 5038270 Surface scraper unit 1964**  
For scraping off the glue residue to achieve a clean  
glued joint  
Controlled at top and bottom, incl. 2 blowing nozzles,  
incl. 2 HM change-over blades



- 5048986 Surface glue scraper FK701**  
With pre and post tracing device for scraping out  
superfluous glue on the complete panel length for a

1.110

clean glue line.  
Pneumatic top shift facility (shifting range 20 mm)  
incl. 2 blow nozzles,  
incl. 2 HW turnover knives (4-fold),  
incl. dust extraction hood



**5064642 Buffing unit 1940** (2 x 0.09 kW, 50 / 60 Hz, 1,400 min-1)  
For cleaning and edge polishing, with 2 textile discs,  
tilting 0 - 5°



#### SPRAYER UNIT

**5065701 Sprayer unit TR301 for the in- and outfeed area**

2.640

For the infeed area: Electronically controlled release agent sprayer with release agent

For the outfeed area: Electronically controlled cleaning agent sprayer with cleaning agent



**5056829 Sprayer unit GM301** after pressure unit  
to sprinkle the edge with lubricant  
recommended for high gloss edge material

860



## PACKAGING

**5032393** Packaging standard  
Machine on pallet or wooden frame, wrapped in foil

**Suitable for shipments per truck/lorry within Europe**

**5032423** Container packing up to a machine length of 5 m  
machine on pallet or wooden frame wrapped in special  
foil,  
incl. moisture protection, packing measures are adapted  
to sea container

146 \*

**Packing suitable for ocean-shipments in containers (FCL .  
Kalsdorf to final destination) without unloading in depots**

## SERVICE

**Z100** **Installation and training day(s)**  
includes technicians expenses, hotel costs, costs for  
flight/car, etc., plus costs for the time taken to travel to  
and from the site

990 \*

The daily working day of 10 hours can be exceeded  
only for proven operational reasons.

The customer must provide two people to help with  
assembly.

Work to be done before installation from customers  
side:

Unpacking, electrical, pneumatic and dust extraction  
connection.

Work which is not covered from the standard installation  
will be invoiced separately.

### **not included:**

Unloading

installation of other tools and units

network connectivity / configuration

data transfer / Interface programming to other programs

**Z100** **Installation viaCockpit and viaConnector Edge**

600 \*

### **Factory Approval:**

Standard factory approval (1 day) at our production  
facility

1.560 \*



Voitsberg near Graz (A), without hotel accommodation.  
Special materials have to be supplied at least 2 weeks  
before date of factory approval by client

#### **GUARANTEE**

The **warranty period** for the machine is **12 months** for  
one-shift operation.

#### **Glu Jet - 3-year warranty**

On all mechanical and electrical parts.

Excluded are damages to the system due to improper  
operation and/or due to insufficient cleaning and  
maintenance. The extended warranty is limited to single  
shift work or a maximum workload of 200.000 meters  
/year.

Please note that the prices with a \* **symbol** are net  
prices.  
You will **not get** an additional discount.

## Annex

1521865 Detailed description of machine control  
Edge Control PPC 322 W  
21.5" touch screen with 16:9 format.  
Network compatible.  
LED display for equipment selection.  
Program list with program names and numbers.  
External USB port.

Individual selection of units with functions as basic setting options for desired values, path points and tool corrections as well as fixed path points.  
Central and clear fine adjustment for unit set-up processes and axis settings (depending on equipment).  
Interval display for minimum interval between workpieces.  
Integrated path control - general or program-specific control of path points.

Clear and complete acquisition of all operating data.  
Service reports in clear text.  
Diagnostic system.  
Integrated synchronous bus system for maximum unit control accuracy.

Individual user management for up to ten users, with password protection.  
Barcode interface (optional).



HOLZ-HER GmbH  
Großer Forst 4  
72622 Nürtingen  
Deutschland  
T +49 (0) 70 22 702-0  
kontakt@holzher.com  
www.holzher.com

Ein Unternehmen der WEINIG Gruppe