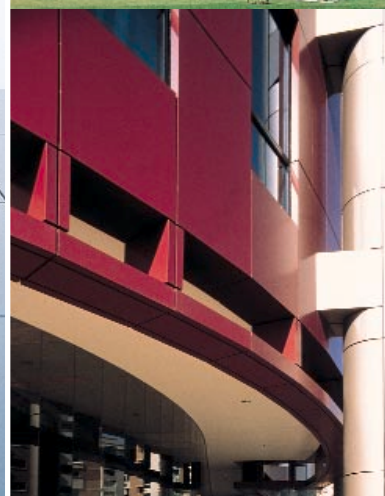
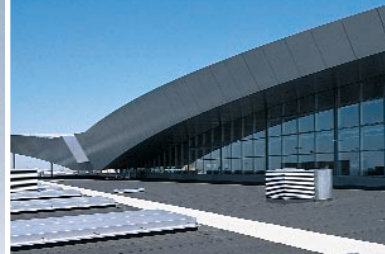
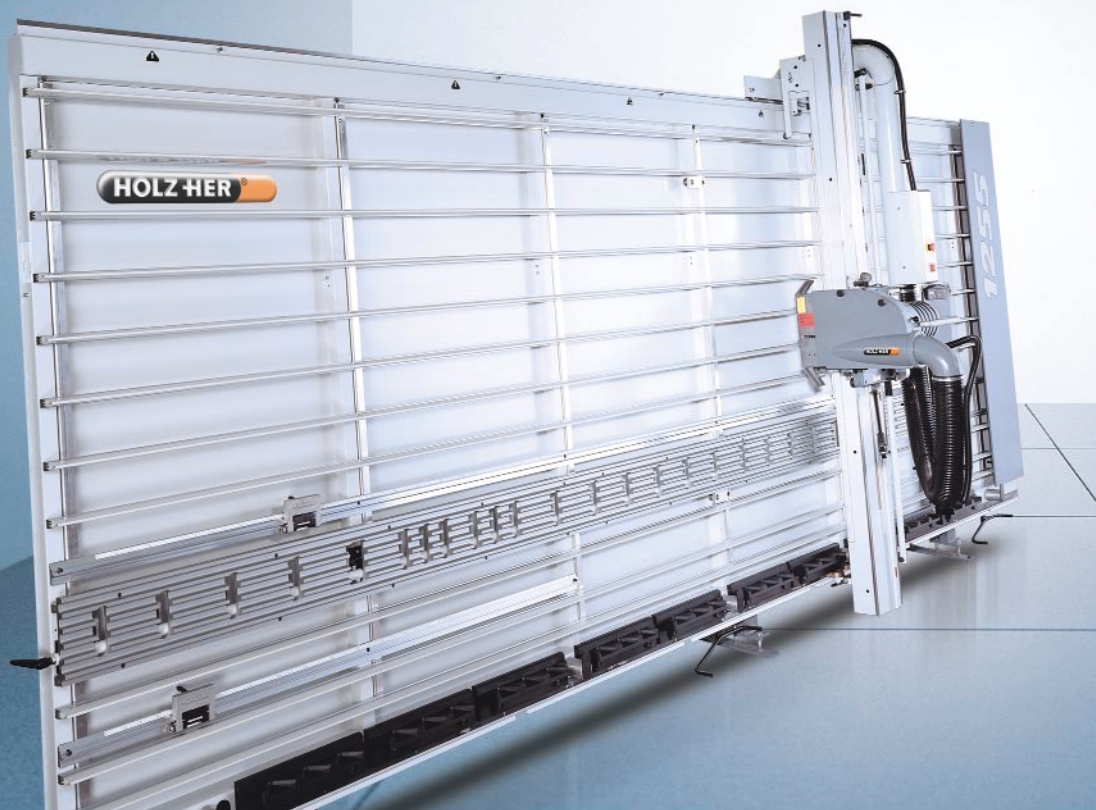


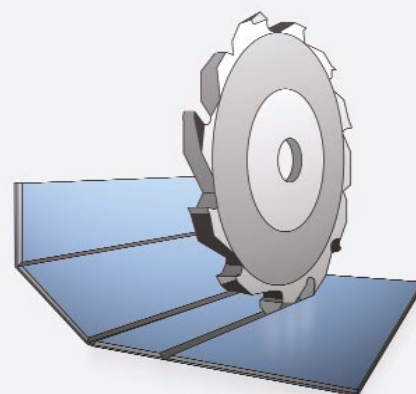
PK 1255 ALUCOBOND



The sparkling solution for composite materials

Composite materials are a common feature in modern architecture. These innovative products are a source of inspiration both in new buildings and renovated old buildings. The materials are used when there is a call for geometric solutions, extremely smooth surfaces, clean lines and sharp corners, but also of course for wavy surfaces and complicated applications.

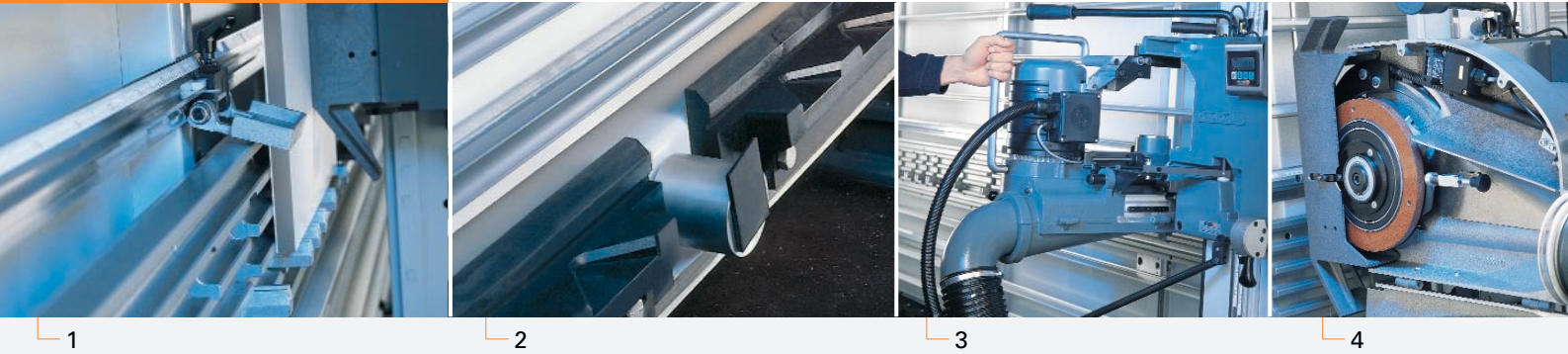
Economic and precise machining of the versatile materials requires a high-performance panel saw with special end milling cutters. The PK 1255 provides a convincing solution on account of its high rigidity. This is provided by the fully welded frame with a self-supporting structure. High cutting precision and angularity are guaranteed.



Technical data	PK 1255
Cutting height up to mm	2.200
Cutting length up to mm	5.300
Motor power (kw)	4,0

Your partner for productivity and precision

HOLZ-HER[®]
Special machines



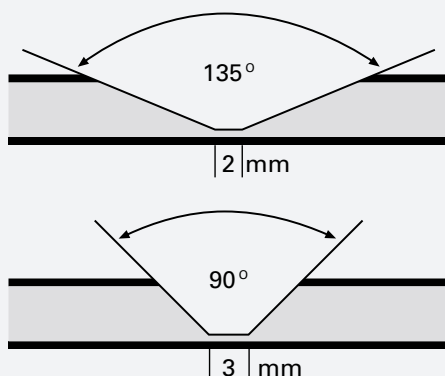
- (Fig. 1) The longitudinal stop extends over the entire length of the machine. The third cutting point serves as a main cutting point. The dimensions to the right and to the left of the stop slide are adjusted by five stop slides each with two dimension indicators (optional).
- (Fig. 1) A folding rail, which also extends over the entire length of the machine, is at an optimal height for ergonomic machining. There is an integrated workpiece support for narrow parts.
- (Fig. 2) The stable workpiece support - which is made of plastic - ensures optimal holding of large and narrow workpieces. Shavings are transported away via obliquely running slots.
- (Fig. 2) Mechanically raisable rollers ensure simple handling in a manner that is kind to the material.
- (Fig. 3) Designed for vertical and horizontal cuts, the saw unit can be pivoted and fixed in a simple manner using one hand. Horizontal cuts are possible in any position.

Accessories for even greater convenience

Different panel thicknesses or frequently repeated horizontal cuts are often a daily feature of machining. To this end, HOLZ-HER offers a range of practical accessories. These include the tracing roller which can be adjusted from 2 to 8 mm.

For repeated horizontal cuts, additional programming cams and strip stops at the stop height of 410 mm and 650 mm should be ordered.

The slide with an extended stop plate is ideal for small workpieces.



Grooves in the two angle sizes 90° and 135°

The end milling cutters (Fig. 4), which can be supplied for folds up to 90° or 135°, cut V-shaped or rectangular grooves on the rear side of the composite panels. In doing so, the aluminium cover sheet and part of the plastic core of the panel are retained. The small thickness of the remaining material allows folding "by hand". No bending machine is required. The groove shape automatically determines the bend radius. Tracing rollers are available for panel thicknesses of 2, 3, 4 and 6 mm.

The technical data given are for reference only. We reserve the right to make changes since HOLZ-HER machines are subject to constant development. The illustrations are therefore not binding. The machines illustrated may contain special features that are not series-standard. For the purpose of better information, the machines have in some cases been shown without the protective hood.

REICH
Spezialmaschinen GmbH
D-72608 Nürtingen
Tel.: +49 (0) 70 22 702-0
Fax: +49 (0) 70 22 702-101
www.holzher.de